



Series 1 Program Update

August 16, 2018

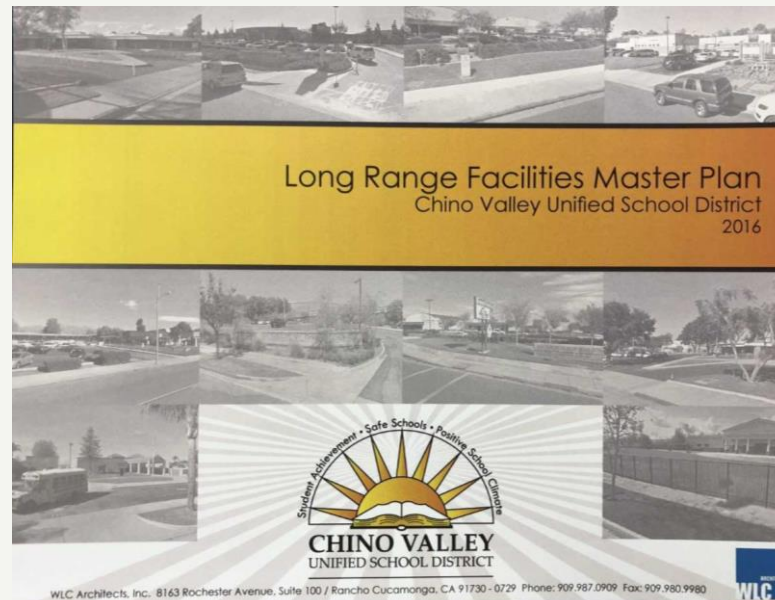
Martin Silveira, Director, Maintenance, Operations, and Construction
Greg Stachura, Assistant Superintendent, Facilities, Planning, and Construction
Sandra Chen, Associate Superintendent, Business Services

Presentation Objectives

- What needs were generated by the Facilities Master Plan?
- What is included in Measure G Series 1 Project List?
- What Measure G funds have we expended?
- What is our next step?



2016 Facilities Master Plan



2016 Facilities Master Plan

Long Range Facilities Master Plan

New Construction

Reconstruct/
construct
schools

Modernization

Modernize/
upgrade
eligible schools
over 25 years
old

Safety/ Security

Provide single
point entry,
keyless access,
fencing, security
and intrusion
alarm system

Addition/ Renovation/ Site Improvement

Upgrade,
renovate and
where
applicable, add
new facilities to
enhance
learning
environment

Furniture

New, flexible
furniture for
21st century
classrooms as
spaces are
renovated

2016 Facilities Master Plan

Guiding Principles

S

T

E

M

P

S

**Safety /
Security**

Technology

Evolution

Maintenance

Parity

Sustainability



2016 Facilities Master Plan

New Construction

Site	2016 Estimated Cost
Chino High School (Reconstruction)	\$130,863,500
Preserve school no. 2	\$22,430,000 (partial)
Future elementary school	\$35,440,000 (partial)
	\$188,733,500

2016 Facilities Master Plan

Modernization

11 Eligible Sites	2016 Estimated Cost
Butterfield Ranch ES (1989)	\$7,727,814
Cattle ES (1991)	\$8,652,196
Country Springs ES (1994)	\$8,363,476
Eagle Canyon ES (1987)	\$6,102,360
Hidden Trails ES (1995)	\$7,278,796
Litel ES (1987)	\$7,257,239
Oak Ridge ES (1988)	\$7,257,239
Rolling Ridge ES (1994)	\$8,363,476
Canyon Hills JHS (1991)	\$13,364,574
Townsend JHS (1986)	\$14,581,779
Ayala HS (1990)	\$30,824,841
	\$119,773,790

2016 Facilities Master Plan

Safety / Security

Borba	Butterfield Ranch	Cattle ES	Chaparral	Cortez
Country Springs	Dickey	Dickson	Eagle Canyon	Glenmeade
Hidden Trails	Liberty	Litel	Marshall	Newman
Oak Ridge	Rhodes	Rolling Ridge	Walnut	Wickman
Former El Rancho Site	Briggs	Cal Aero K-8	Canyon Hills	Magnolia
Ramona	Townsend	Woodcrest	Adult School/ District Support	Alt. Ed. Center
Ayala	Buena Vista	Chino	Chino Hills	Don Lugo

2016 Estimated Cost \$55,813,500

2016 Facilities Master Plan

Addition / Renovation / Site Improvement

Borba	Butterfield Ranch	Cattle ES	Chaparral	Cortez
Country Springs	Dickey	Dickson	Eagle Canyon	Glenmeade
Hidden Trails	Liberty	Litel	Marshall	Newman
Oak Ridge	Rhodes	Rolling Ridge	Walnut	Wickman
Former El Rancho Site	Briggs	Cal Aero K-8	Canyon Hills	Magnolia
Ramona	Townsend	Woodcrest	Adult School/ District Support	Alt. Ed. Center
Ayala	Buena Vista	Chino	Chino Hills	Don Lugo

2016 Estimated Cost \$637,559,263

2016 Facilities Master Plan

Estimated Cost

Long Range Facilities Master Plan				
New Construction	Modernization	Safety/ Security	Addition/ Renovation/ Site Improvement	Furniture
\$188,733,500	\$119,773,790	\$55,813,500	\$ 637,559,263	\$27,906,750

Total estimated cost:

\$1,029,786,803

Measure G Timeline

November 2016

- **\$750,000,000** Measure G Bond approved by Chino Valley voters

January 2017

- Board of Education approved Series 1 & 2 Implementation Plan

February 2017

- Measure G Citizens Oversight Committee formed

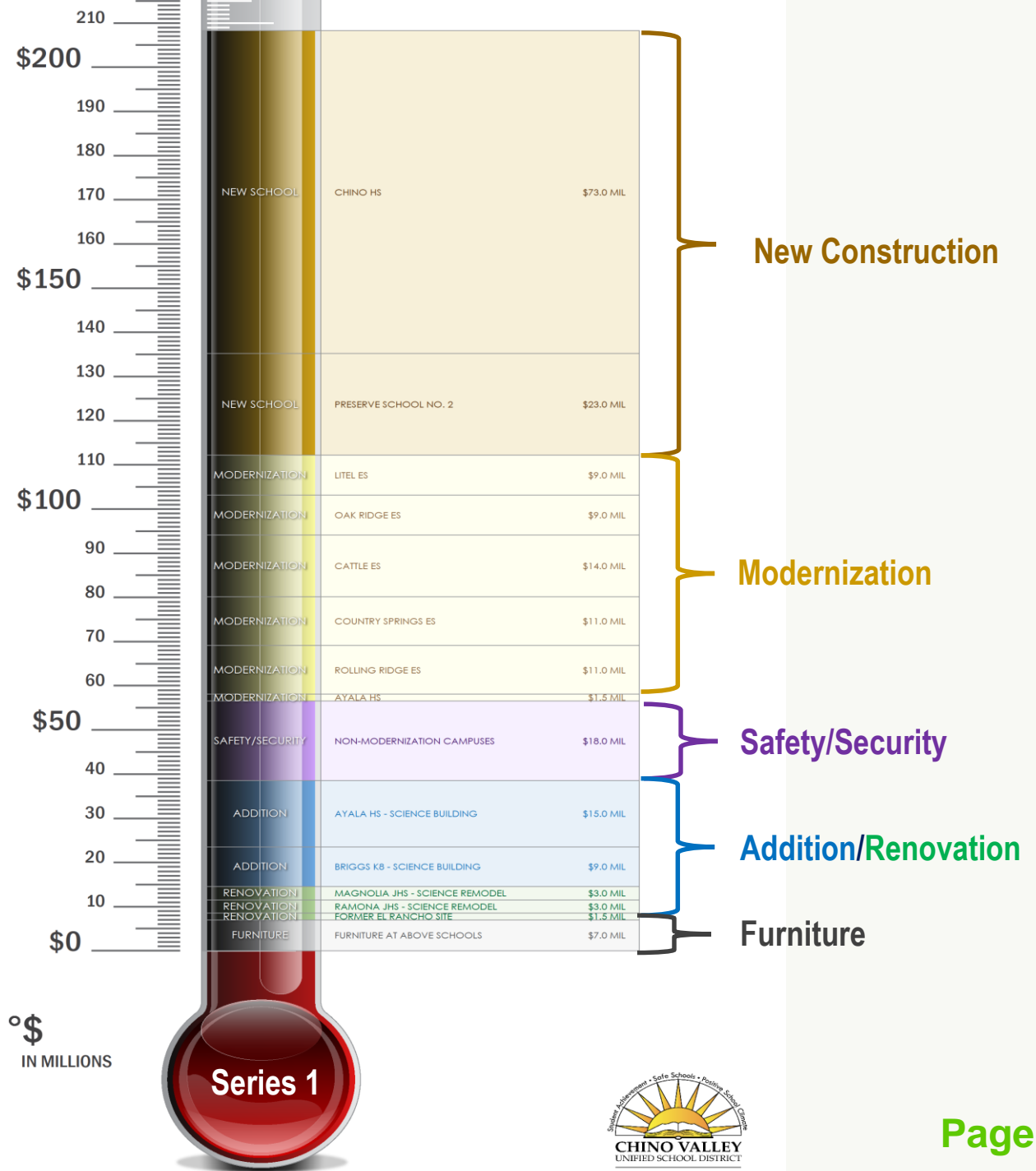
March 2017

- Board of Education approved the sale of the first issuance of bonds

May 2017

- First issuance of **\$208 million** in bonds sold (Series 1)

Board Approved Implementation Plan



2016 Facilities Master Plan

Long Range Facilities Master Plan

**New
Construction**

Modernization

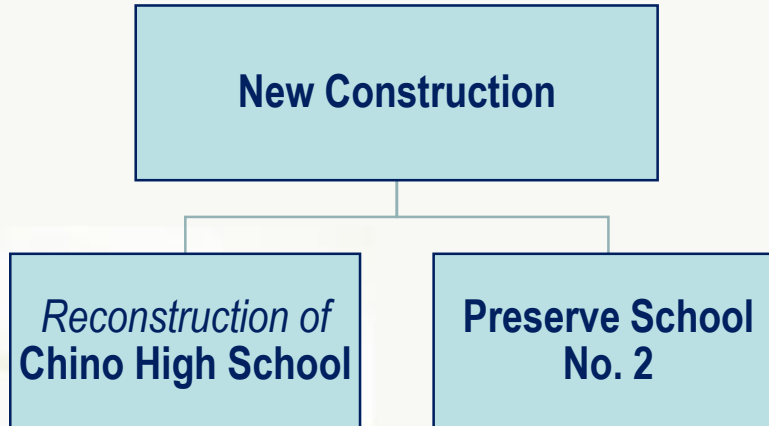
**Safety/
Security**

**Addition /
Renovation /
Site Work**

Furniture

Measure G Series 1 Update

New Construction



Chino HS Reconstruction

Bid/Award Phase (Phase Zero – Site Work)

DSA Review Phase (Phase One/Two – Buildings)

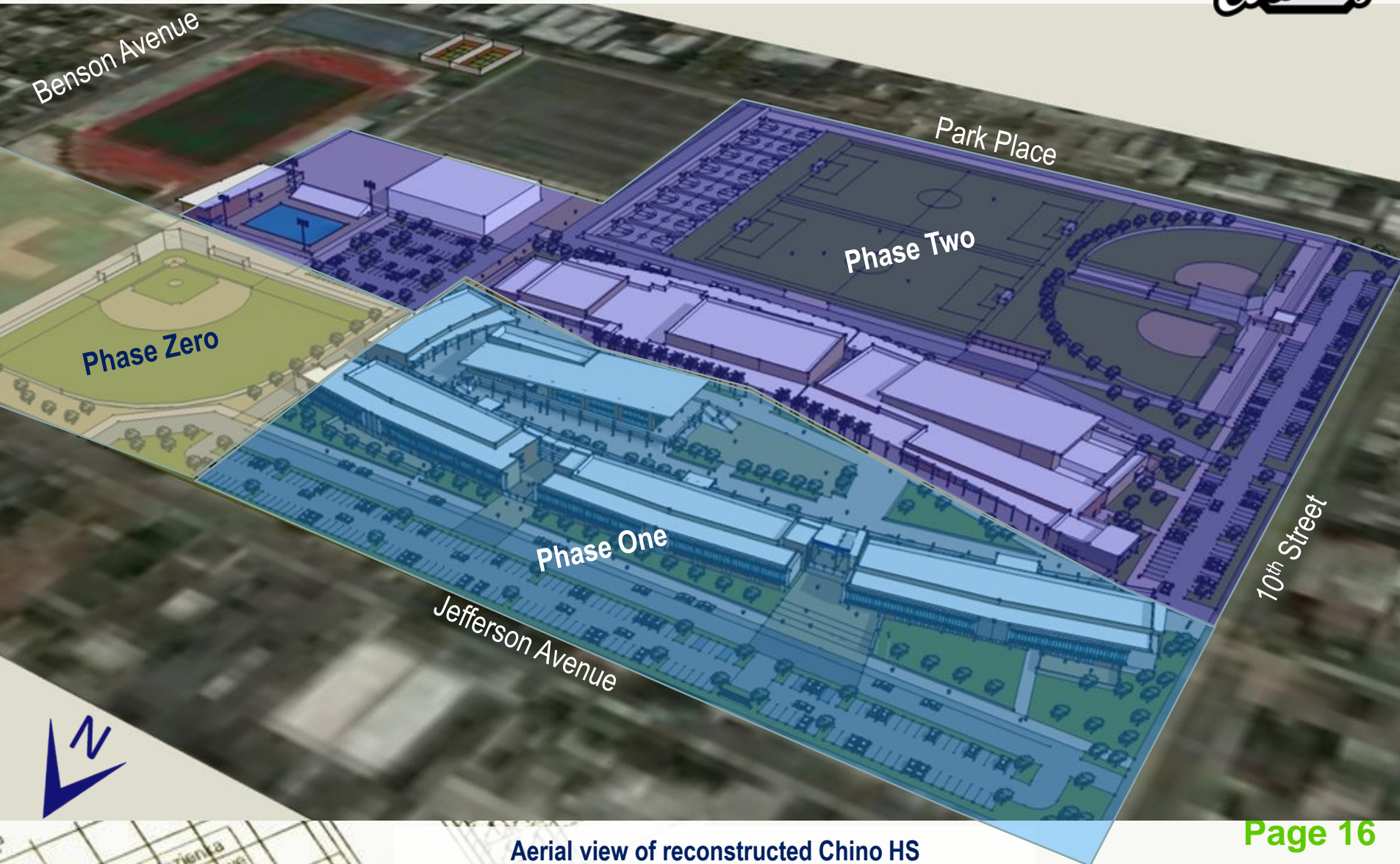


Aerial view of existing Chino High School

Chino HS Reconstruction

Bid/Award Phase (Phase Zero – Site Work)

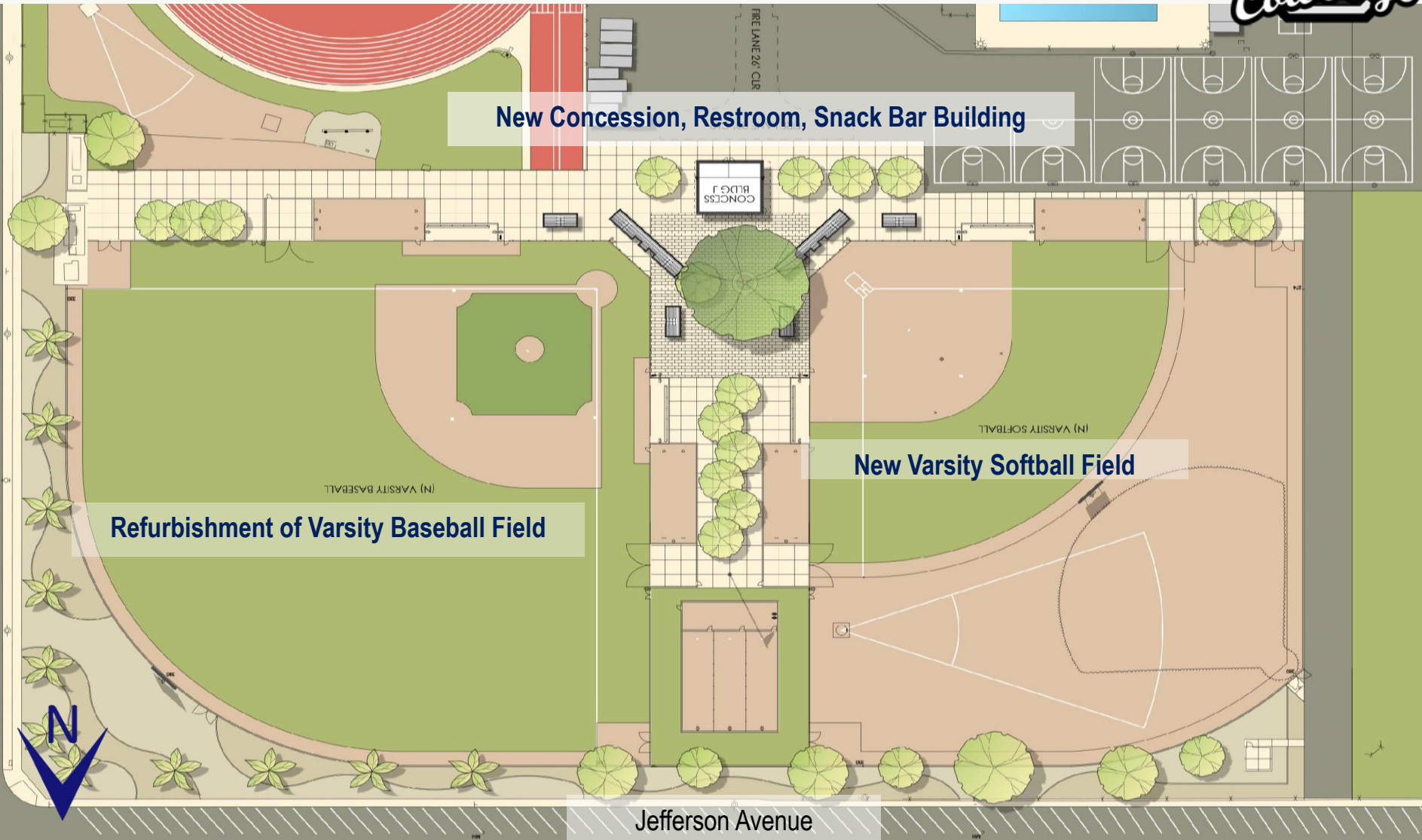
DSA Review Phase (Phase One/Two – Buildings)



Aerial view of reconstructed Chino HS

Chino HS Reconstruction

Bid/Award Phase (Phase Zero – Site Work)



Chino HS Reconstruction

DSA Review Phase (Phase One – Office, Classrooms, Library)



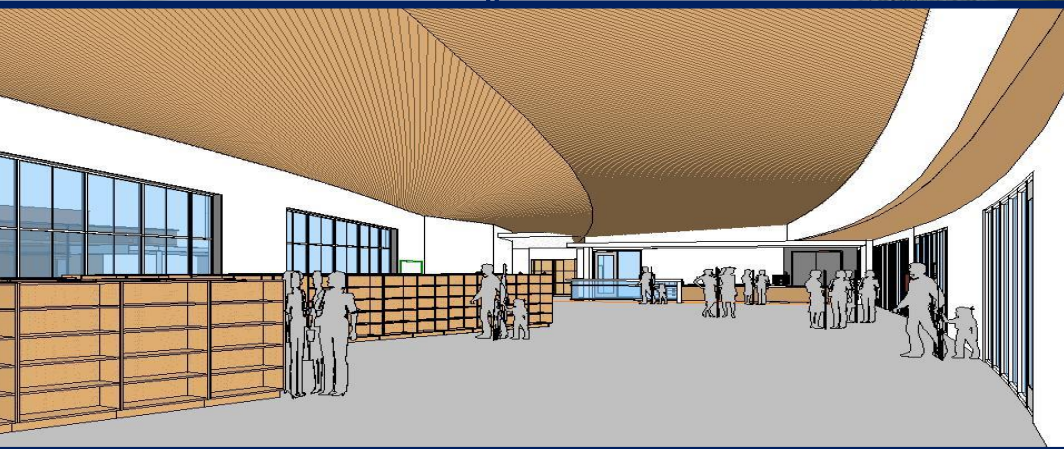
Aerial view of reconstruction Chino HS

Chino HS Reconstruction

DSA Review Phase (Phase One – Office, Classrooms, Library)



Exterior view of Library



Interior view of Library

Chino HS Reconstruction

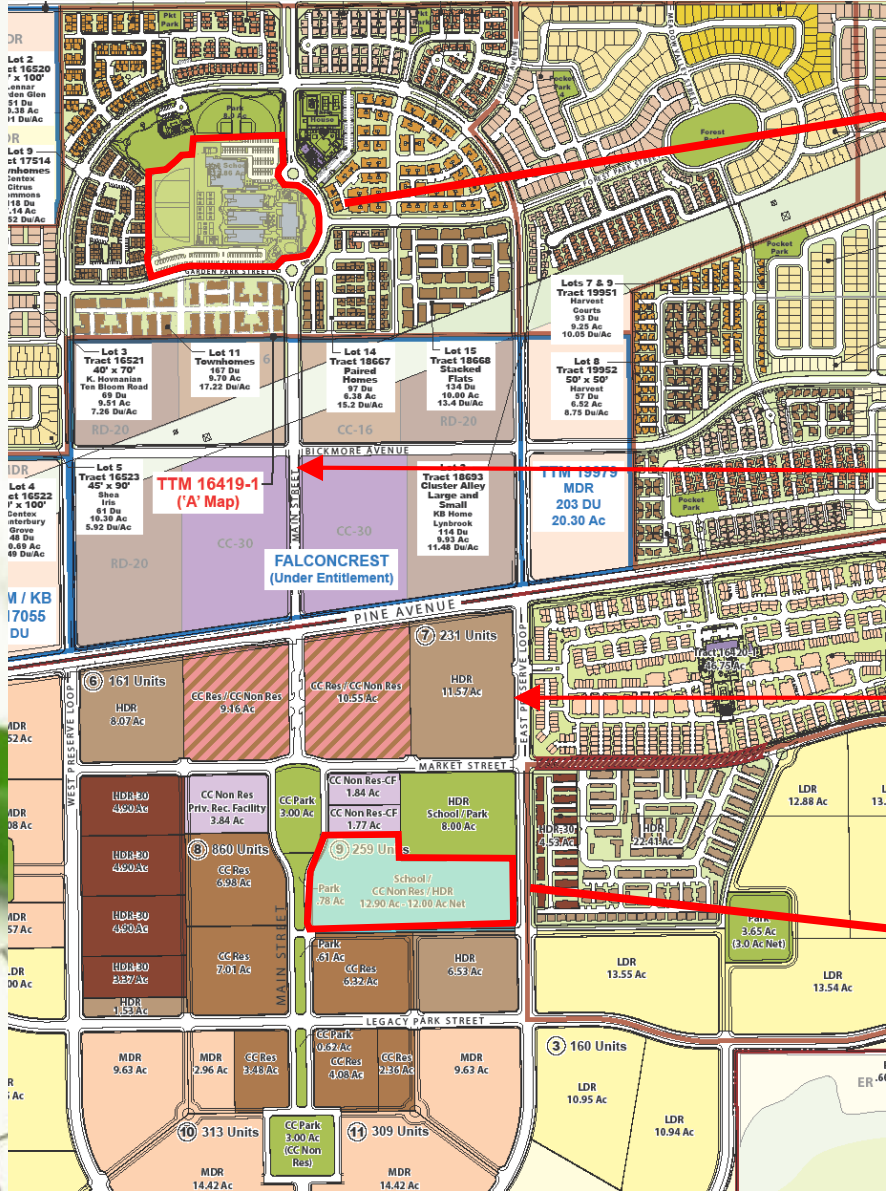
DSA Review Phase (Phase One – Office, Classrooms, Library)



Interior views of administration building

Preserve School No. 2

Planning Phase



Cal Aero Preserve Academy

Main Street

East Preserve Loop

Preserve school no. 2 site

Preserve School No. 2

Planning Phase



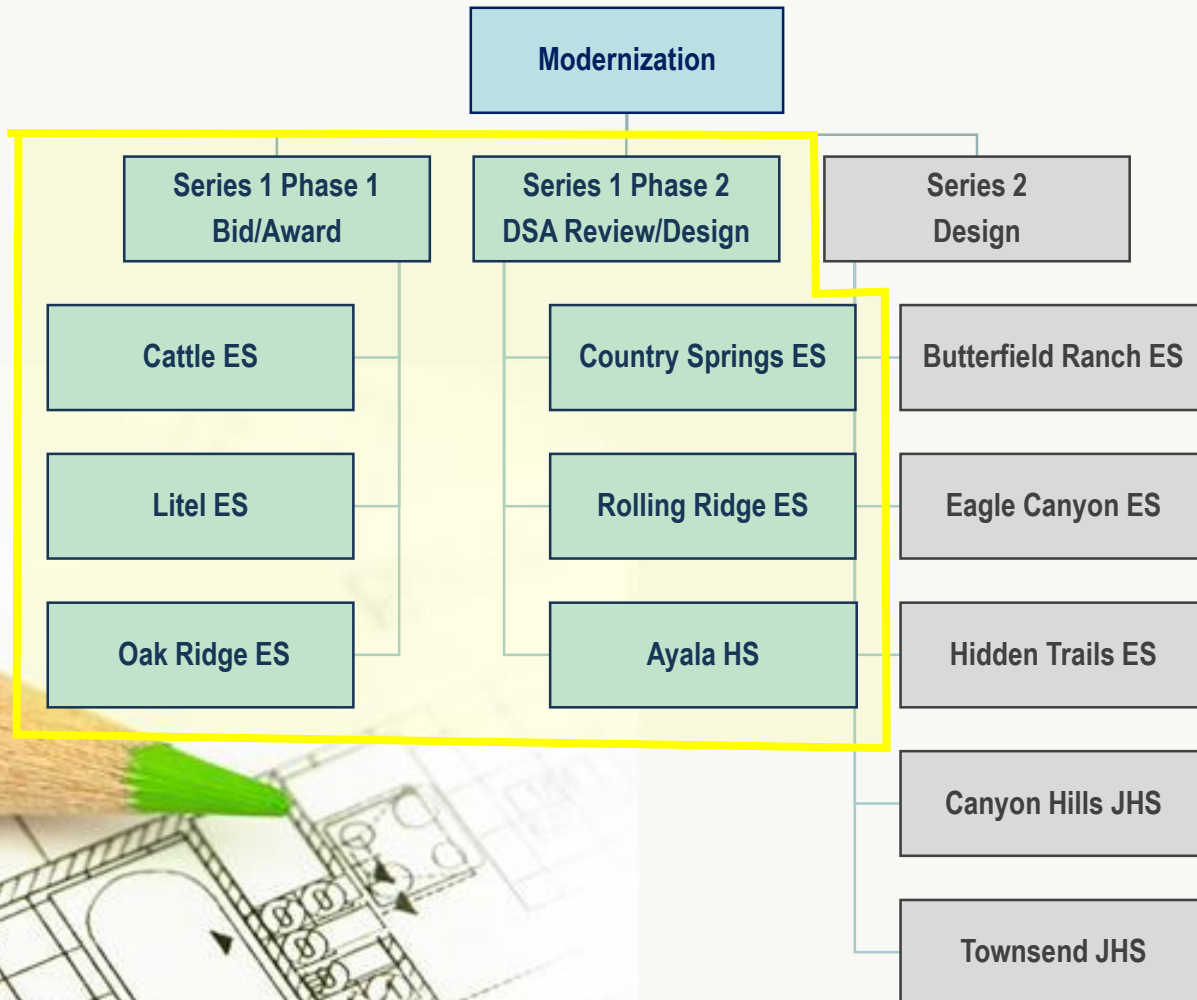
2016 Facilities Master Plan



Modernization Scope	
Code Requirements	Basic Needs
<ul style="list-style-type: none">Accessible parking/passenger loading zoneAccessible path of travel from public street and w/in campusDoor thresholds and hardwareAccessible signageAccessible restroom upgradesAccessible drinking fountainsLift at MPR stageFire alarm upgradesRevise existing sprinklersStructural upgrades for reconfigured spaces	<ul style="list-style-type: none">Replace/upgrade HVACInstall Energy Management SystemReplace roofingUpgrade electrical service/panelUpgrade plumbing fixtures/piping as neededReplace select interior/exterior doorsReplace water heaters, seismic strapping as neededReplace floor finishesPaint interiorsNew furniture

Measure G Series 1 Update

Modernization



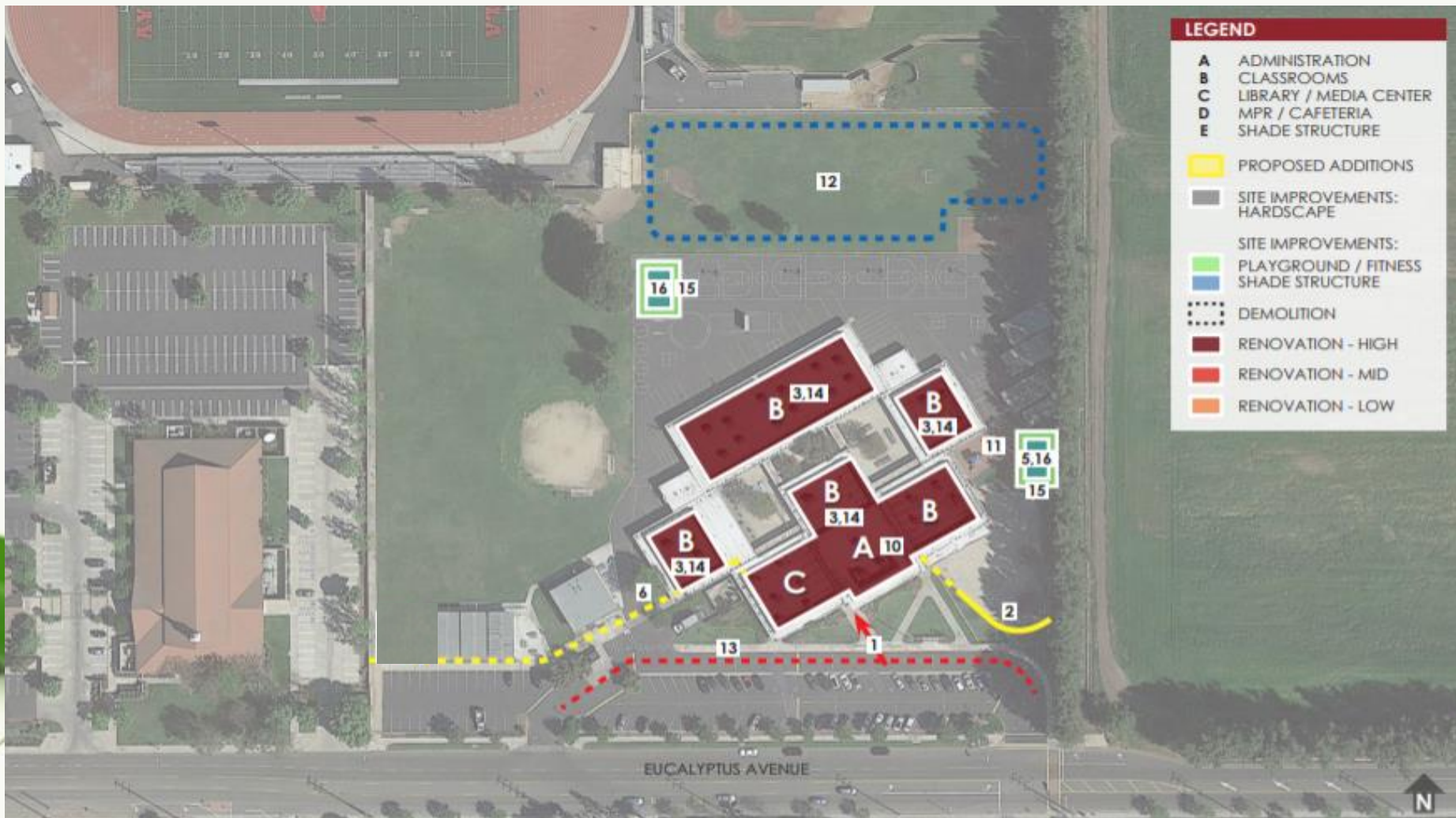
Cattle ES Modernization

Bid/Award Phase



Aerial view of Cattle ES

Bid/Award Phase



Aerial view of Litel ES

Oak Ridge ES Modernization

Bid/Award Phase



Aerial view of Oak Ridge ES

Cattle/Litel/Oak Ridge ES Modernization

Bid/Award Phase

- New finishes
- Instructional technology
- New, flexible furniture



Interior view of elementary classroom

Cattle/Litel/Oak Ridge ES Modernization

Bid/Award Phase



Interior view of elementary classroom

DSA Review Phase



- RENOVATION - HIGH
- RENOVATION - MID
- RENOVATION - LOW



Rolling Ridge Modernization

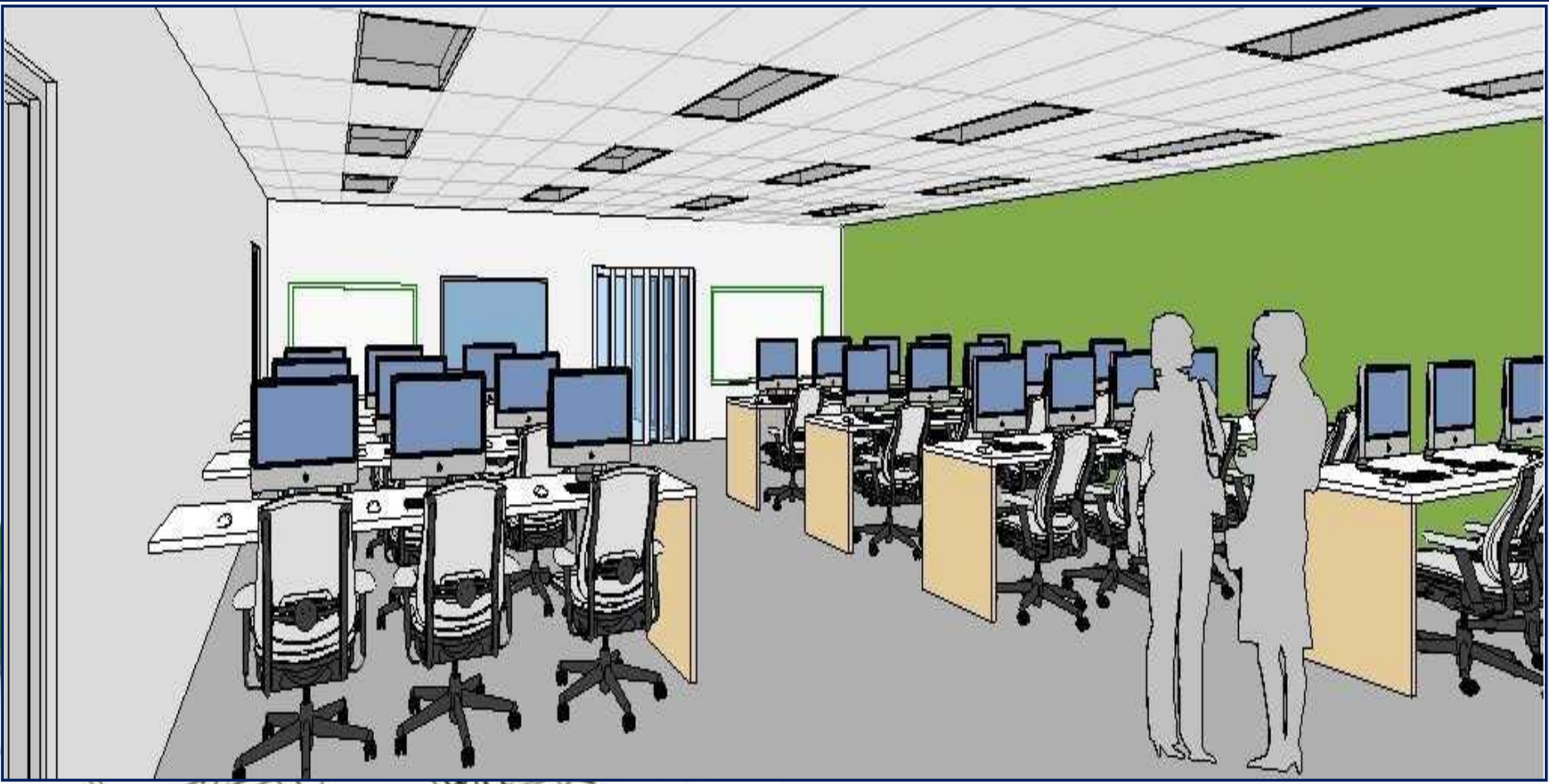
DSA Review Phase



Aerial view of Rolling Ridge ES

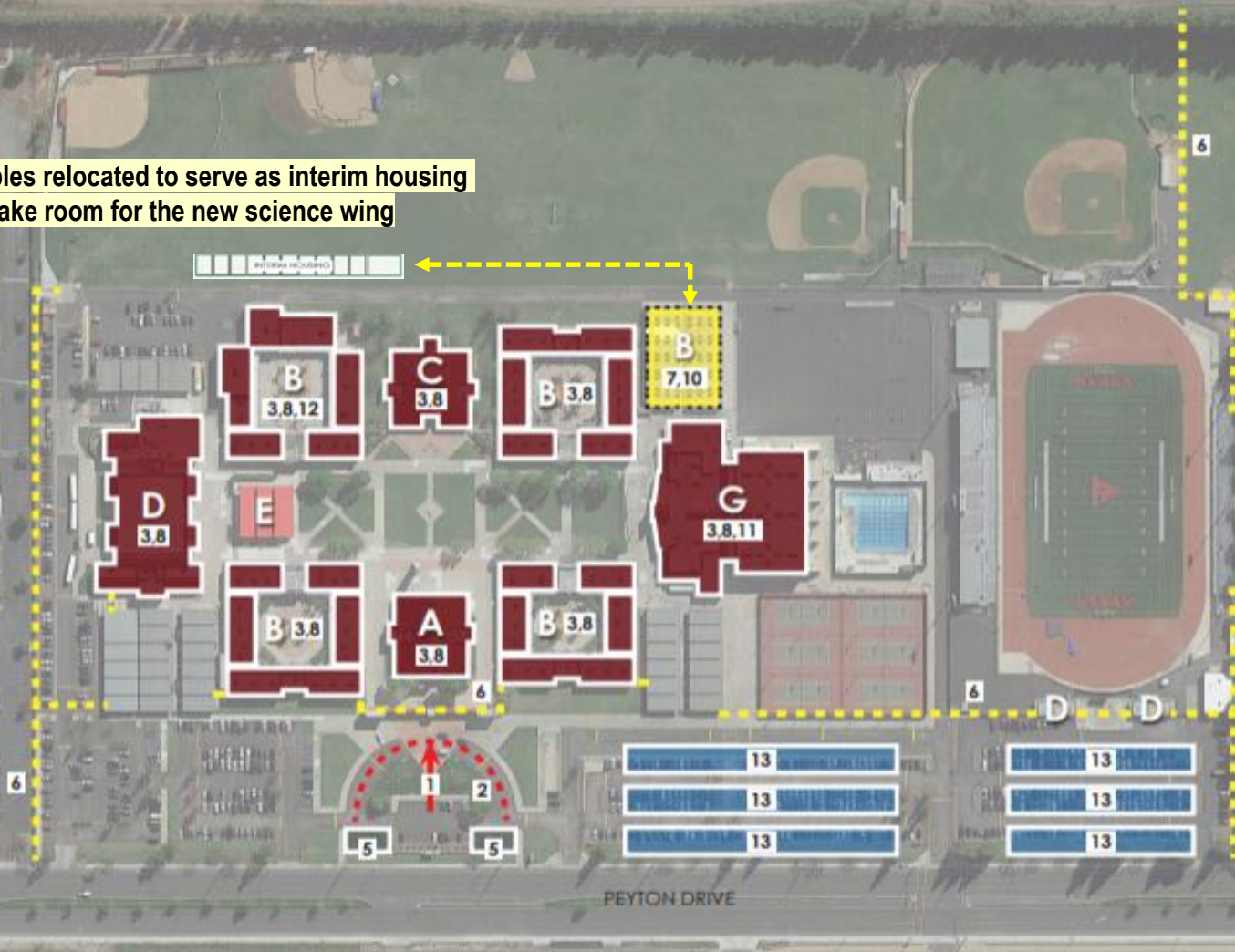
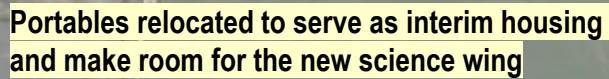
Country Springs/Rolling Ridge Modernization

DSA Review Phase



Interior view of computer lab

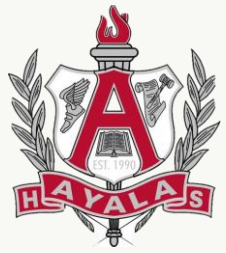
Design Phase



Aerial view of Ayala HS

Ayala HS Modernization

Design Phase



Interior view of computer lab

2016 Facilities Master Plan



Measure G Series 1 Update

Safety / Security

Borba	Butterfield Ranch	Cattle ES	Chaparral	Cortez
Country Springs	Dickey	Dickson	Eagle Canyon	Glenmeade
Hidden Trails	Liberty	Litel	Marshall	Newman
Oak Ridge	Rhodes	Rolling Ridge	Walnut	Wickman
Former El Rancho Site	Briggs	Cal Aero K-8	Canyon Hills	Magnolia
Ramona	Townsend	Woodcrest	Adult School/ District Support	Alt. Ed. Center
Ayala	Buena Vista	Chino	Chino Hills	Don Lugo

Safety/Security Components



Peephole



Keyless entry

- Single point of entry modifications
- Keyless access control hardware
- Security cameras
- Intrusion alarm upgrades
- Public address system

Safety/Security Components

Upgrades completed...



Single point of entry established at 96% of school sites

Single Point of Entry



Chaparral ES

Dickey ES

Rhodes ES

Keyless Access



Liberty

Don Lugo HS (partial)

Woodcrest

Security Cameras



Liberty

Woodcrest

Intrusion System



Upgraded PA system at 96% of school sites

PA System

Measure G Series 1 Update

Safety / Security

Group 1

Bid/Award Phase

Borba	Butterfield Ranch	Cattle	Chaparral	Cortez
Country Springs	Dickey	Dickson	Eagle Canyon	Glenmeade
Hidden Trails	Liberty	Litel	Marshall	Newman
Oak Ridge	Rhodes	Rolling Ridge	Walnut	Wickman
Former El Rancho Site	Briggs	Cal Aero K-8	Canyon Hills	Magnolia
Ramona	Townsend	Woodcrest	Adult School/ District Support	Alt. Ed. Center
Ayala	Buena Vista	Chino	Chino Hills	Don Lugo

Measure G Series 1 Update

Safety / Security

Group 2

Design Phase

Borba	Butterfield	Cattle	Chaparral	Cortez
Country Springs	Dickey	Dickson	Eagle Canyon	Glenmeade
Hidden Trails	Liberty	Litel	Marshall	Newman
Oak Ridge	Rhodes	Rolling Ridge	Walnut	Wickman
Former El Rancho Site	Briggs	Cal Aero K-8	Canyon Hills	Magnolia
Ramona	Townsend	Woodcrest	Adult School/ District Support	Alt. Ed. Center
Ayala	Buena Vista	Chino	Chino Hills	Don Lugo

Anticipated Construction Summer 2019

Measure G Series 1 Update

Safety / Security

Group 3

Design Phase

Borba	Butterfield	Cattle	Chaparral	Cortez
Country Springs	Dickey	Dickson	Eagle Canyon	Glenmeade
Hidden Trails	Liberty	Litel	Marshall	Newman
Oak Ridge	Rhodes	Rolling Ridge	Walnut	Wickman
Former El Rancho Site	Briggs	Cal Aero K-8	Canyon Hills	Magnolia
Ramona	Townsend	Woodcrest	Adult School/ District Support	Alt. Ed. Center
Ayala	Buena Vista	Chino	Chino Hills	Don Lugo

2016 Facilities Master Plan



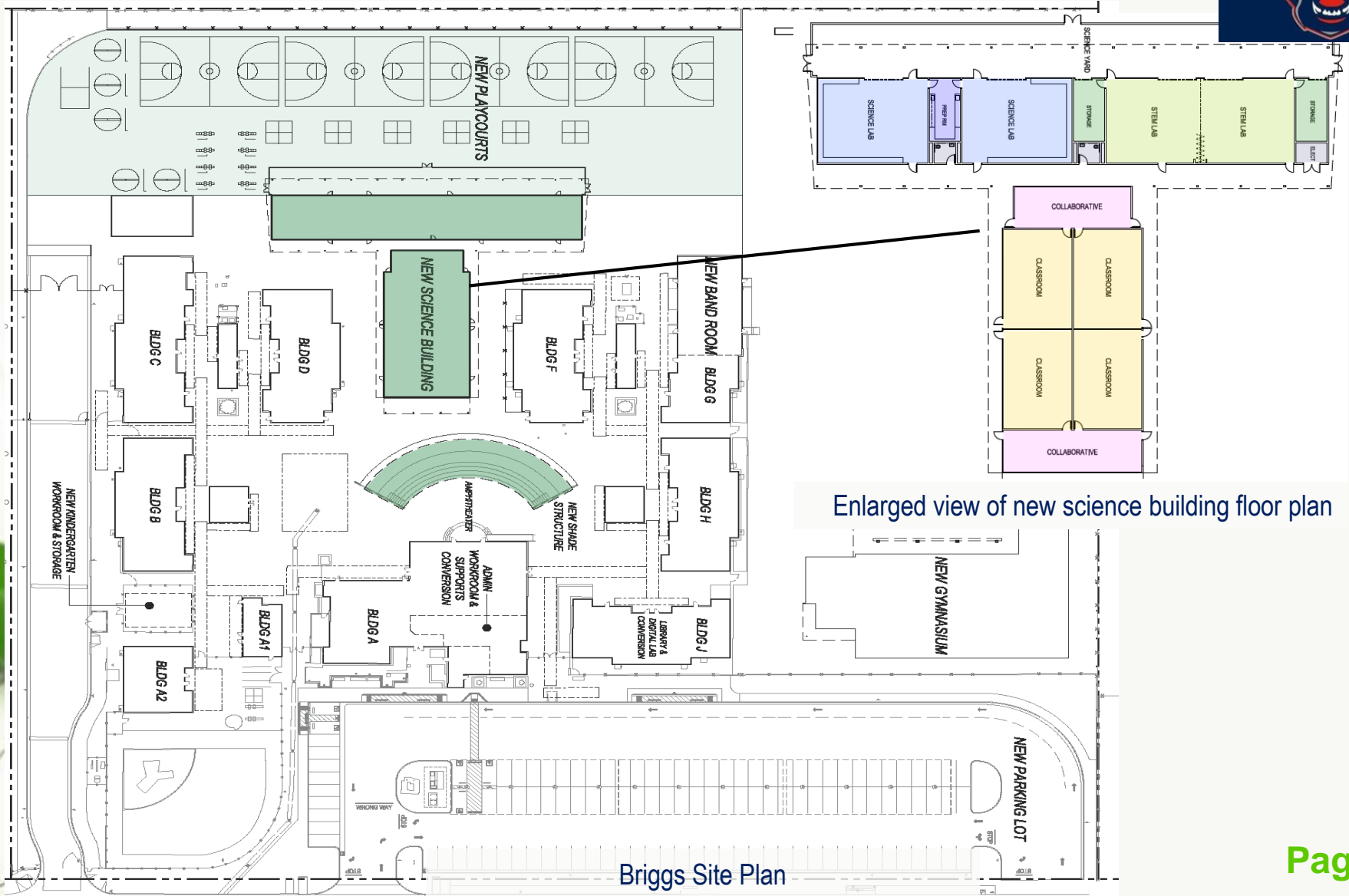
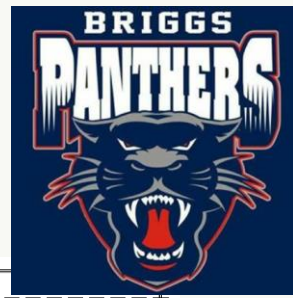
Measure G Series 1 Update

Renovation / Addition / Site Improvement

Borba	Butterfield Ranch	Cattle ES	Chaparral	Cortez
Country Springs	Dickey	Dickson	Eagle Canyon	Glenmeade
Hidden Trails	Liberty	Litel	Marshall	Newman
Oak Ridge	Rhodes	Rolling Ridge	Walnut	Wickman
Former El Rancho Site	Briggs	Cal Aero K-8	Canyon Hills	Magnolia
Ramona	Townsend	Woodcrest	Adult School/ District Support	Alt. Ed. Center
Ayala	Buena Vista	Chino	Chino Hills	Don Lugo

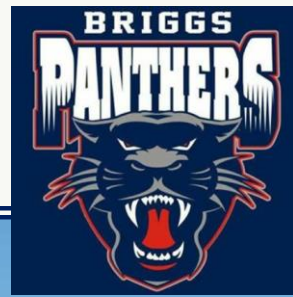
Briggs K-8 Science Wing

Design Phase



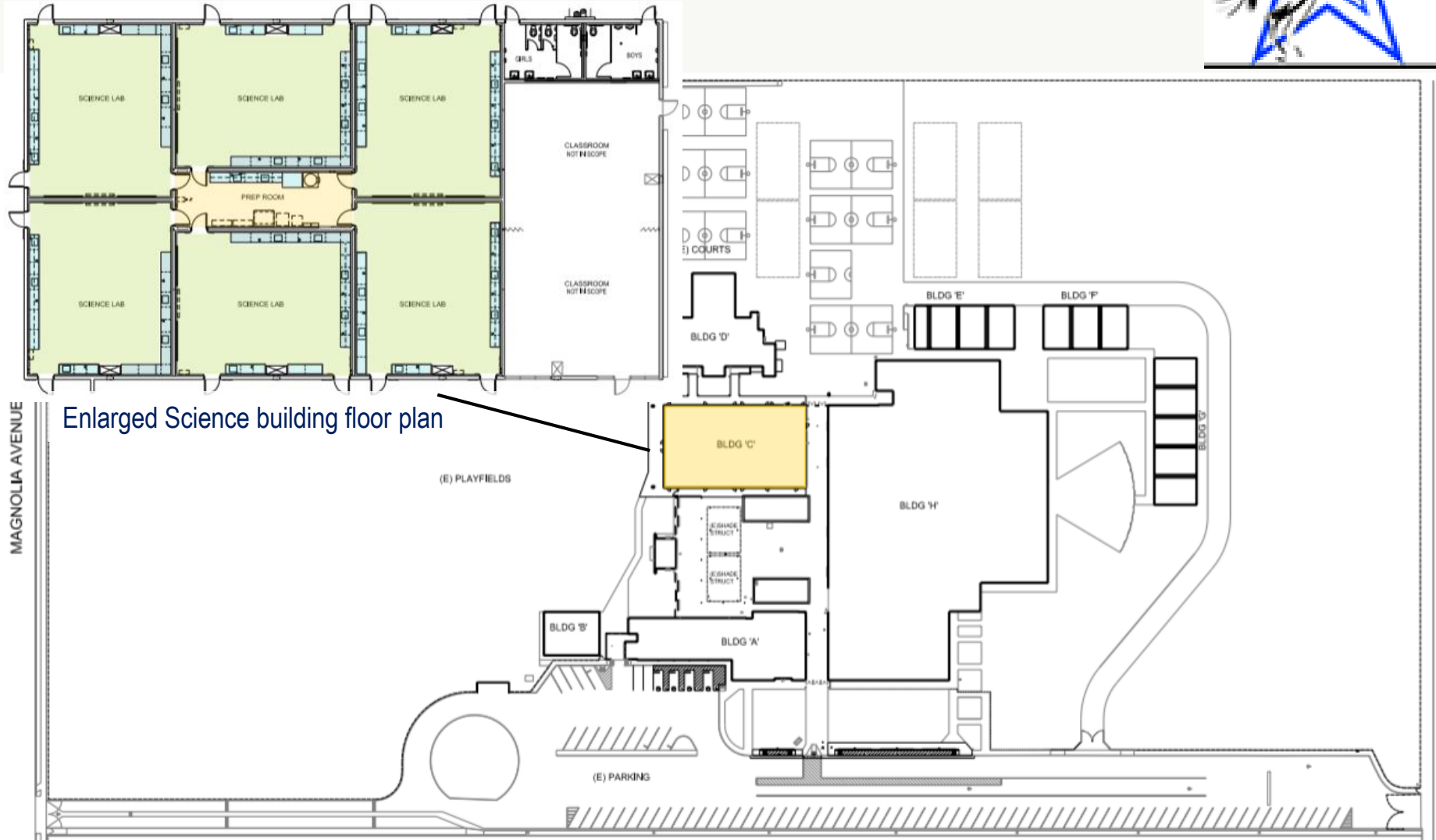
Briggs K-8 Science Wing

Design Phase



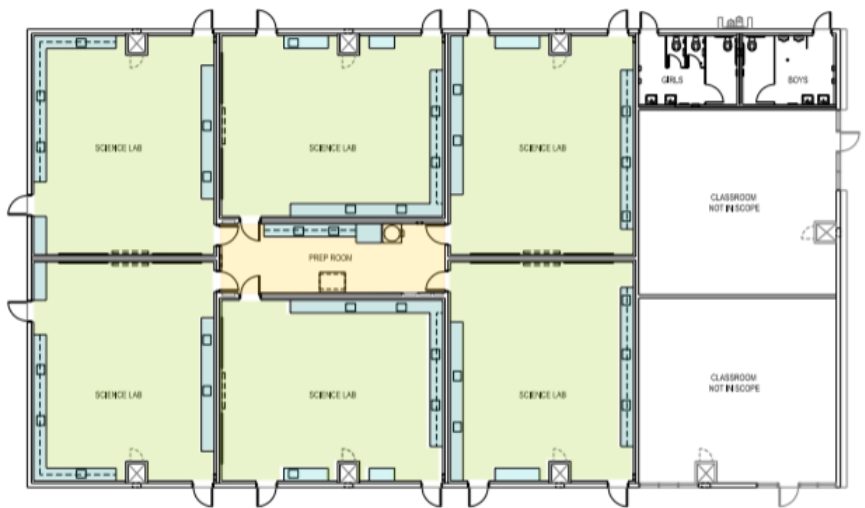
Exterior view of new science building

Design Phase



Ramona JHS Science Renovation

Design Phase



Enlarged Science building floor plan

(E) PLAYFIELDS

AVENUE

DOE

(E) COURTS

BLDG 'E1'

BLDG 'E'

BLDG 'C'

BLDG 'D'

BLDG 'F'

BLDG 'G'

BLDG 'B'

BLDG 'A'

BLDG 'J'

BLDG 'H'

'H1'

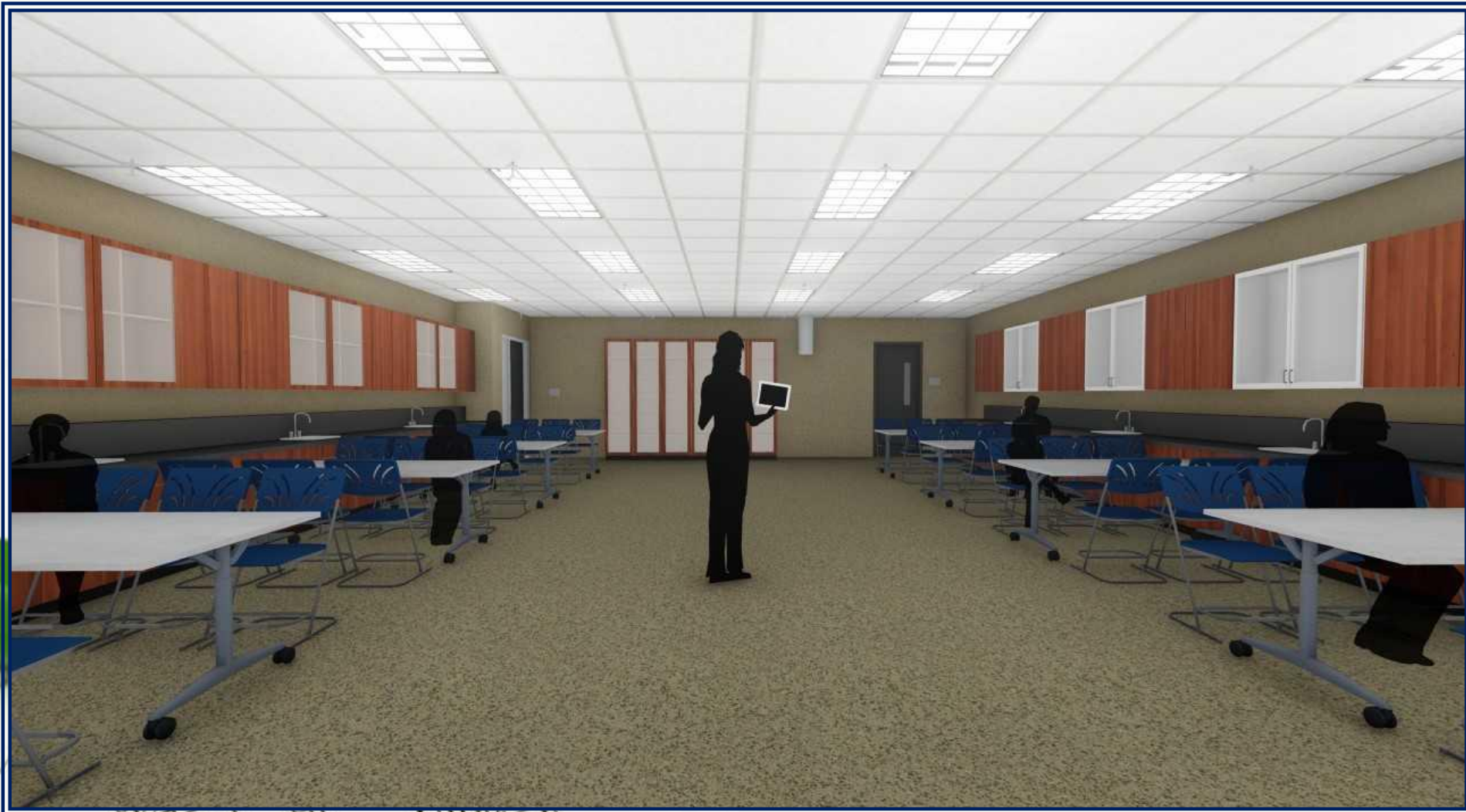
(E) PARKING LOT

WALNUT AVENUE

DOE

Magnolia JHS/Ramona JHS Science Renovation

Design Phase



Interior view of science classroom/lab

Magnolia JHS/Ramona JHS Science Renovation

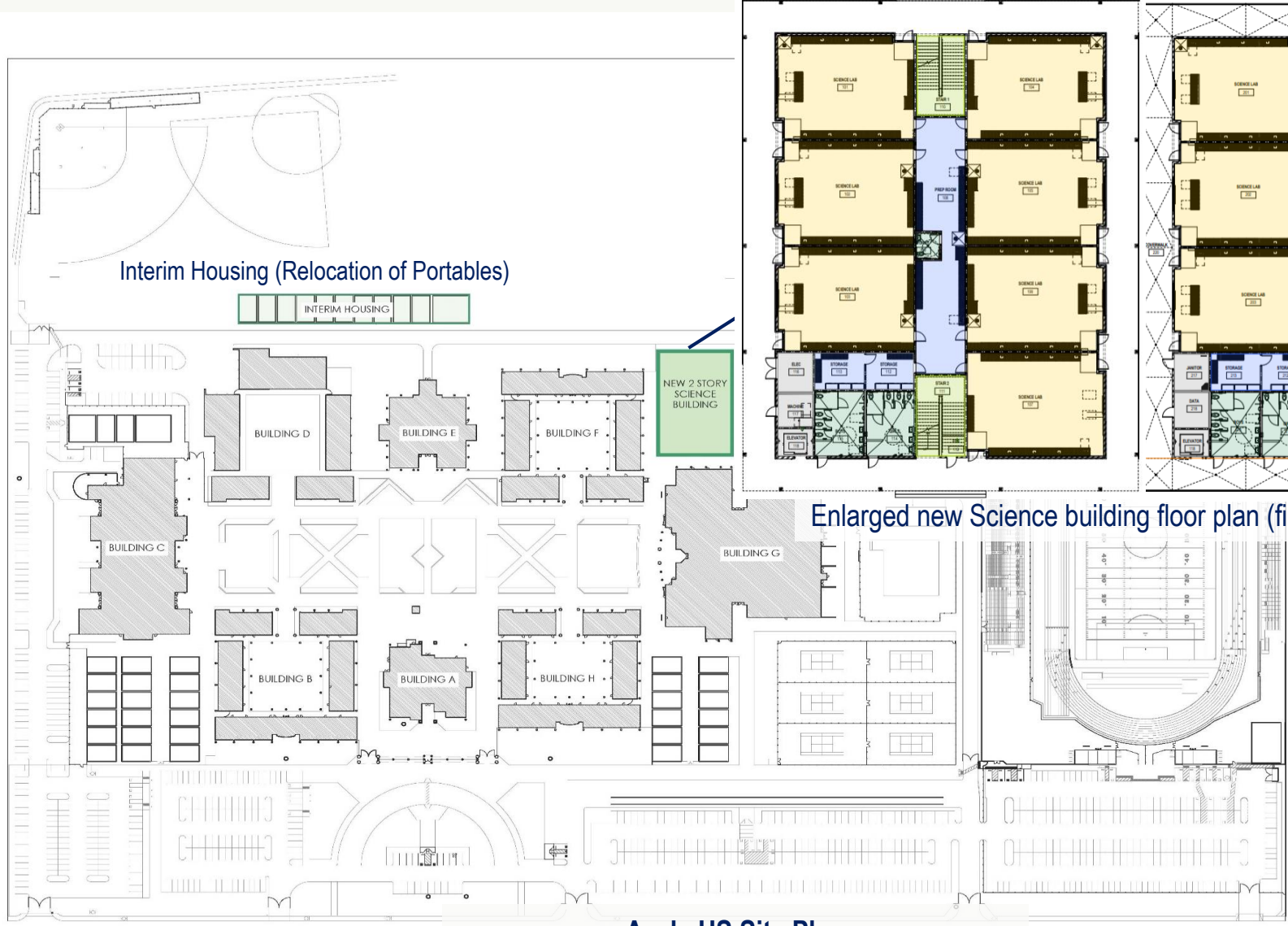
Design Phase



Interior view of science classroom/lab

Ayala High School Science Wing

DSA Review Phase



Enlarged new Science building floor plan (first and second floor)

Ayala HS Site Plan

Ayala High School Science Wing

DSA Review Phase



Exterior view of new science wing

Ayala High School Science Wing

DSA Review Phase



Interior of science lab/classroom

Measure G Series 1 Program Recap



Bid/Award

- Chino HS Phase 0
- Cattle ES Mod
- Litel ES Mod
- Oak Ridge Mod
- Group 1 Safety/Security

DSA Review

- Chino HS Phase 1 & 2
- Country Springs ES Mod
- Rolling Ridge ES Mod
- Ayala HS Science Wing

Design

- Butterfield Ranch ES Mod
- Eagle Canyon ES Mod
- Hidden Trails ES Mod
- Canyon Hills JHS Mod
- Townsend JHS Mod
- Ayala HS Mod
- Briggs Science Wing
- Magnolia JH Science Reno
- Ramona JH Science Reno
- Group 2/3 Safety/Security

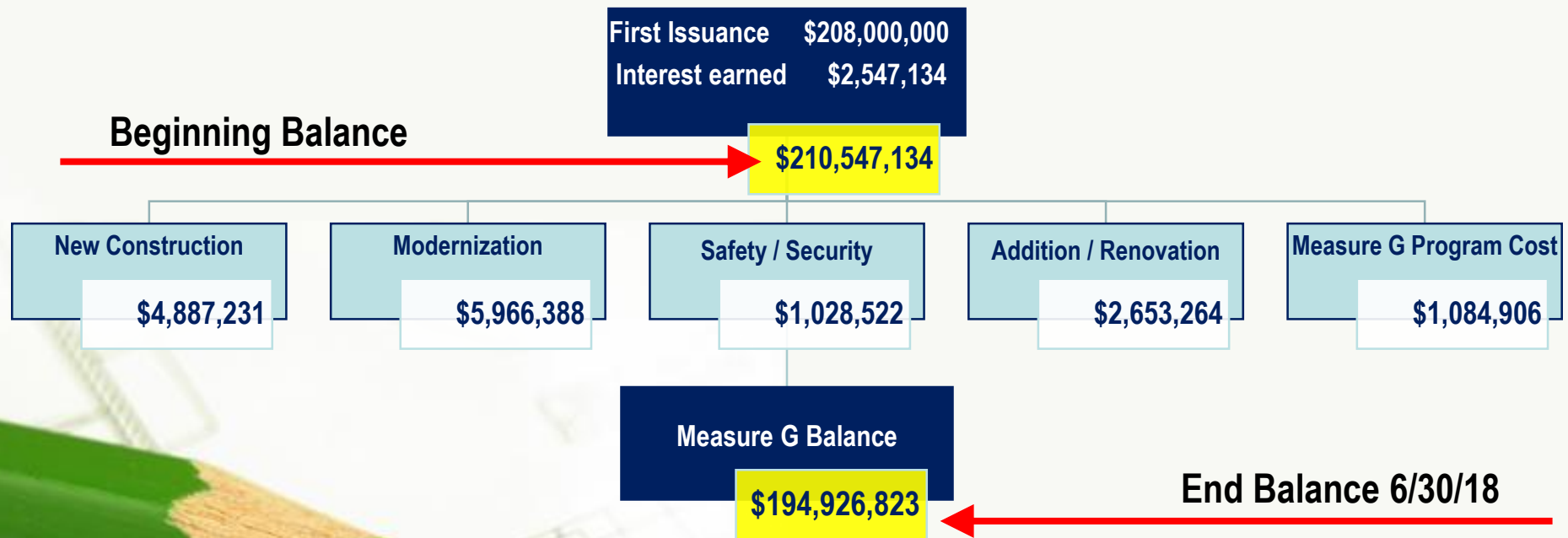
Planning

- Preserve School No. 2

Measure G Expenditure Summary

New Construction	Modernization	Safety/Security	Renovation/Addition	General Program Costs
<ul style="list-style-type: none"> ▪ CHS 4,887,231 ▪ Preserve 0 	<ul style="list-style-type: none"> ▪ Cattle 705,079 ▪ Litel 495,079 ▪ Oak Ridge 492,562 ▪ Country Sprs. 478,691 ▪ Rolling Rdge 416,986 ▪ Butterfield 310,644 ▪ Eagle Cnyn 353,897 ▪ Hidden Trls 297,042 ▪ Canyon Hls. 765,515 ▪ Townsend 817,149 ▪ Ayala 833,745 	<ul style="list-style-type: none"> ▪ District-wide 1,028,522 	<ul style="list-style-type: none"> ▪ Briggs 325,225 ▪ Magnolia 164,591 ▪ Ramona 165,818 ▪ Ayala 1,852,406 ▪ Former El Rancho 145,224 	<ul style="list-style-type: none"> ▪ Bond Iss. 394,734 ▪ Legal/audit/elec 134,253 ▪ Payroll 317,505 ▪ Prgm. software 166,580 ▪ Mobile office 63,037 ▪ Misc. 8,797
\$4,887,231	\$5,966,388	\$1,028,522	\$2,653,264	\$1,084,906
Expended \$15,620,311 As of June 30, 2018				

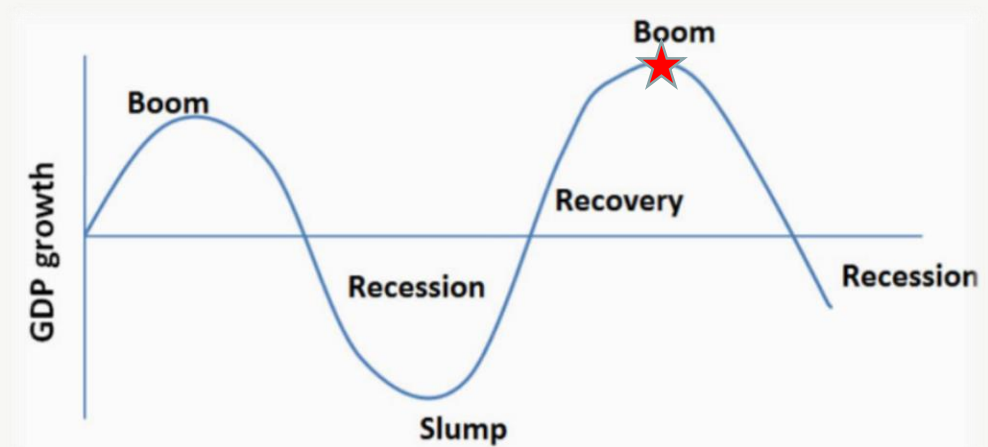
Measure G Expenditure Recap



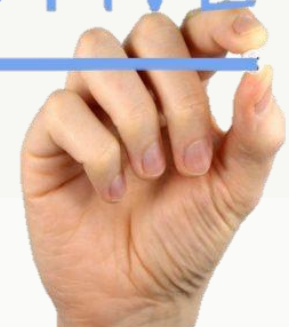
The Road Ahead

Ongoing Variables

- Economy
- Demographics
- Facilities Needs
- Construction Climate
- Assessed Valuation



PROACTIVE



Measure G Team - CVUSD

100% Measure G funded position

50% Measure G funded position

TEAM CVUSD

Project Planning

Director of Planning

Director of Technology

Technology Coordinator

Director of Purchasing

Procurement Coordinator

Construction Services

Director of MOC

Construction Coordinator

Construction Coordinator

Typist Clerk II

MOC Supervisors

Administrative Support

Accountant II

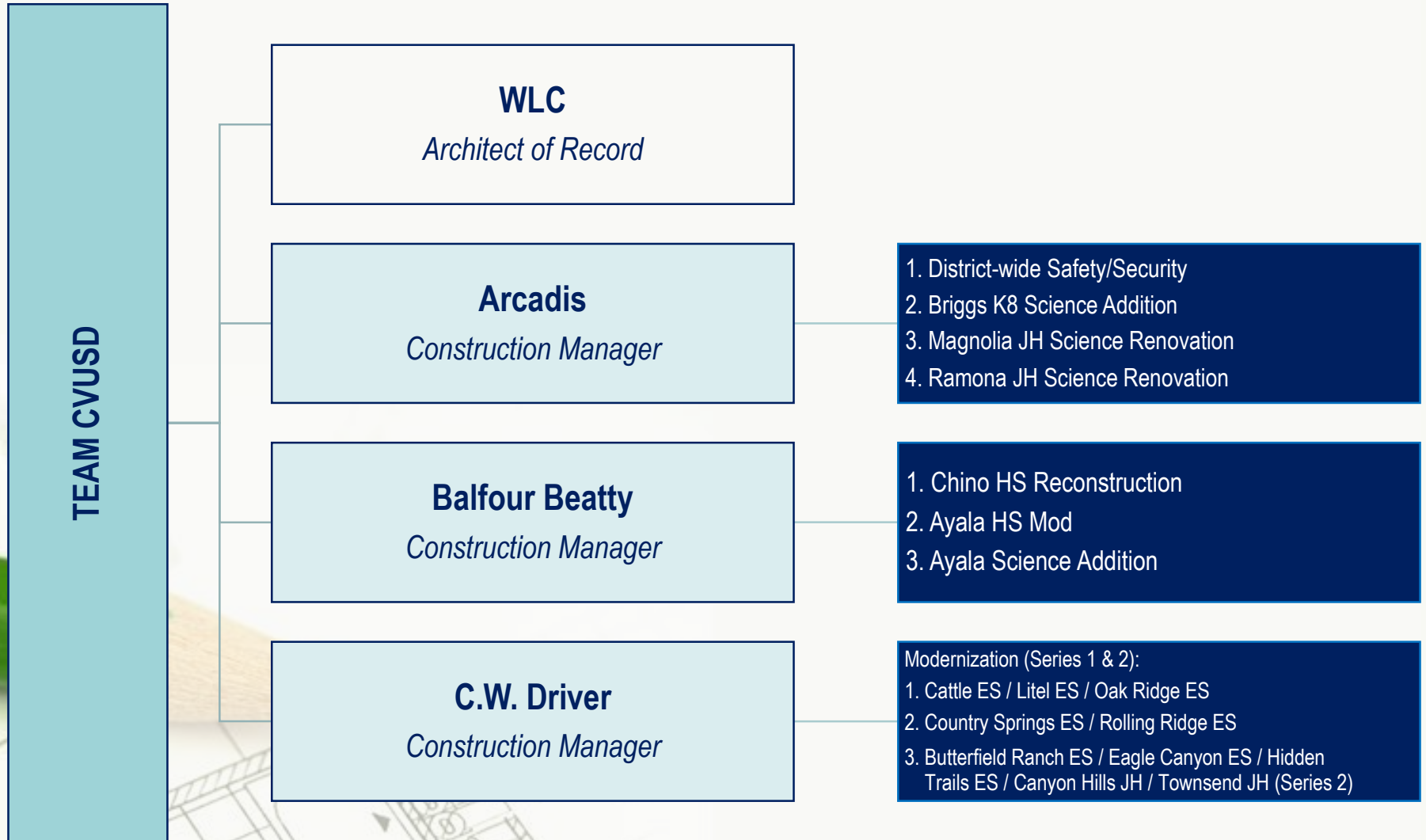
Account Clerk III

Administrative Assistants

Assistant Superintendent

Associate Superintendent

Measure G Team – Consultants



Citizens Oversight Committee

Measure G COC Members		
Lou Alfonso <i>Senior Citizen Rep.</i>	Vacant <i>Business Rep.</i>	Don Bridge <i>Member At-Large</i>
Kevin Cisneroz <i>Parent/Guardian</i>	Carol Cole <i>Member At-Large</i>	Mark Hargrove <i>Taxpayers Assoc. Rep.</i>
William Kolbow <i>Parent/Guardian</i>	Mariaelena Gomez-Lecaro <i>Parent Active in PTA</i>	Michael Rohrer <i>Member At-Large</i>
	Bonnie Tran <i>Parent Active in PTA</i>	
Paul Rodriguez <i>City of Chino Rep.</i>	Art Bennett <i>City of Chino Hills Rep.</i>	Ruben Valencia <i>City of Ontario Rep.</i>

- Meeting Quarterly (next meeting August 22, 2018 @ 5:30 pm)
- COC Webpage <https://www.chino.k12.ca.us/Page/21783>

QUESTIONS?

